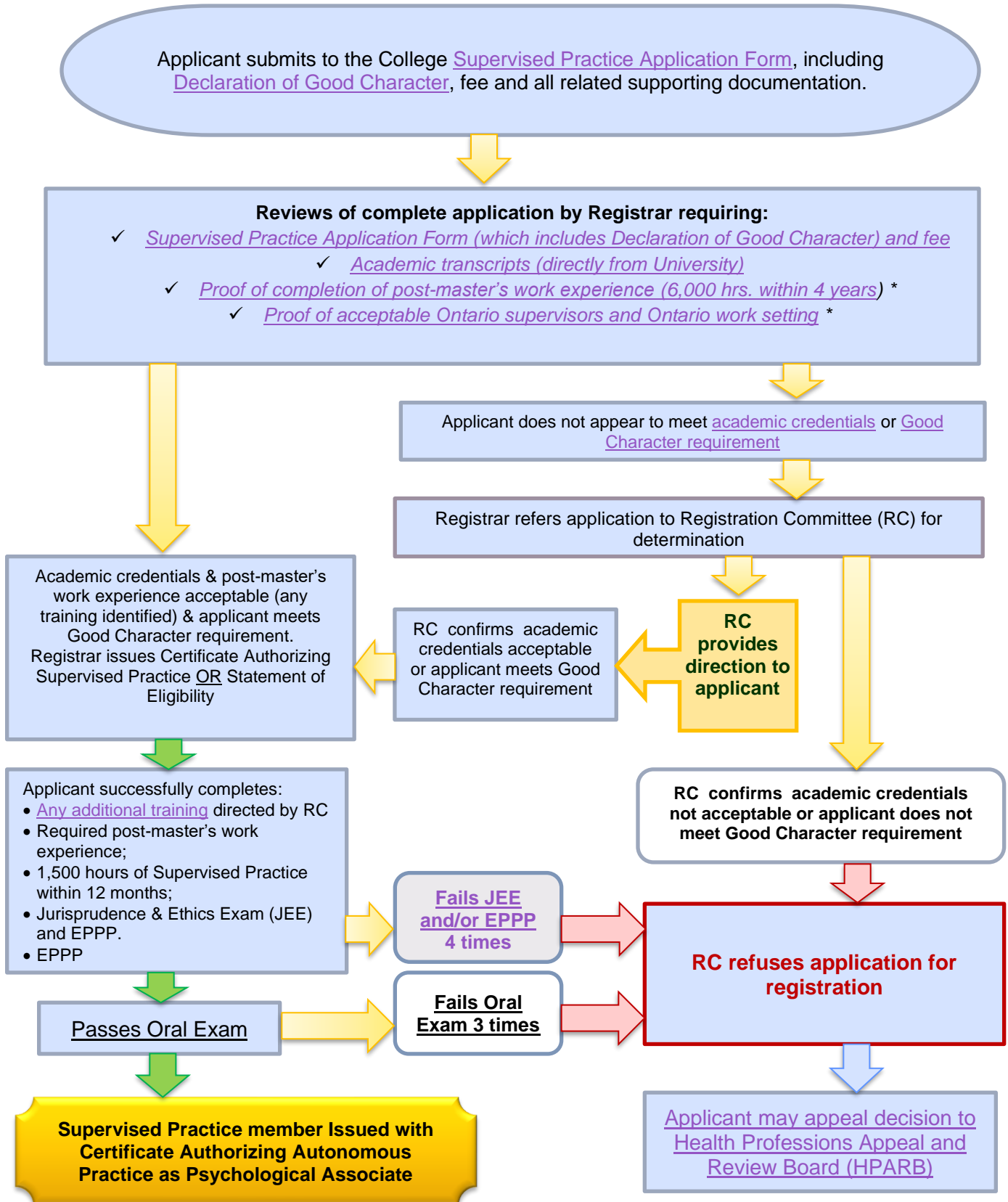




Steps in the Registration Process:

Psychological Associate applicants whose master's degree in psychology was obtained from Canada or USA

'click' on each step to view details described in the Registration Guidelines



*Applicants who have not yet completed the required number of hours of post-master's work experience or who have not yet secured an Ontario work setting and supervisors may still request a Statement of Eligibility. This confirms that his or her academic credentials are acceptable for the purpose of registration as a psychological associate.